

A professional woman with blonde hair, wearing a beige suit jacket over a striped shirt, is seated at a conference table. She is holding a large sheet of paper and looking towards the camera with a slight smile. In the background, two other people are seated at the table, working on documents. The setting appears to be a modern office or meeting room with large windows.

USoft Product Information  
The USoft Advantage

## The USoft Advantage

### Why you need a Business Rules Engine

Business is constantly changing because of evolving opportunities, pressure from competition, customer demands and the advent of the Internet. USoft's development environment allows you to develop large, functionally complex business information systems featuring:

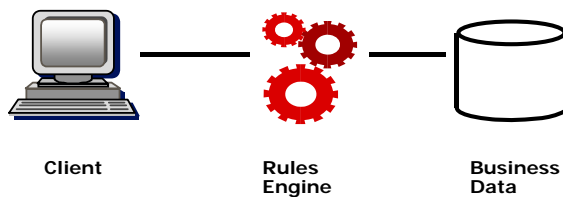
- Speed of development.
- Superb adaptability to change.
- An open architecture, interoperable with other development environments and independent of deployment platforms.

#### Business Rules

- Gold card customers get a 2% discount on full prices
- Participants who are on a diet must be insured
- Cancelled reservations cannot be reinstated
- End date must be later than start date
- Operators must register a customer before commencing and type of transaction

#### How USoft Achieves This

USoft positions a Rules Engine between business data and interfaces. Core business information is captured in the form of rules. The Rules Engine will enforce or execute the rules no matter what.



#### Why Rules?

- Rules are modular: they can be created and changed independently of user interfaces and other rules.
- Developers do not need in-depth knowledge of coding languages – rules are initially stated in everyday language. Once agreed upon, many are implemented by simple declaration, others through standard SQL statements. This way, coded rules are documented automatically.
- Business logic is no longer tucked away in window scripts, server pages and other procedural code, but is centrally maintained regardless of how you choose to deploy your system.

#### Stop Programming Windows or Web Pages!

However user-friendly your development tools, you will never attain USoft's level of adaptability if you continue to code business rules in windows, Active Server Pages, Java applets, or scripts. Take advantage of the real-world difference between business logic and software interfaces, and let us apply this central idea to all your development efforts.

### USoft in an Open Software Architecture

You are likely to use a number of different tools for your overall system development and let each tool do what it does best. That's why we emphasize interoperability and componentization. USoft:

- Is open to Microsoft Component Services and J2EE object layers and Tuxedo services, both at the level of rule definition and user interface design.
- Can be part of highly scalable transactions in Microsoft Transaction Server (MTS) architecture, including back office transactions initiated from Active Server Pages, Java Server Pages or applet-based web applications.
- Offers native support for all industry-standard RDBMSs, including MS SQL Server 2000 up to and including SQL Server 2008 are supported by USoft 8 and Oracle versions 10 and 11.
- Is able to exchange data model information with almost every modeling tool or data dictionary using wide meta-data bridges to Microsoft Repository and Universal Data Access sources.

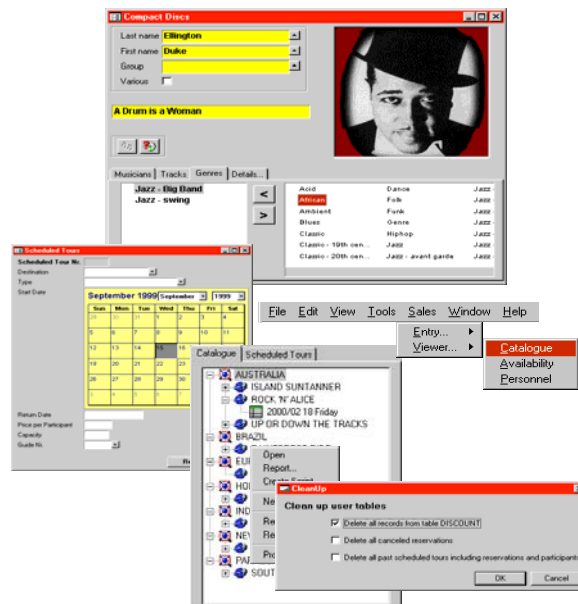
### Introducing USoft Technology

The core characteristics of the USoft platform are:

- Generation of *default prototype applications* on the basis of a data model.
- Specification of *business rules*.
- Deployment of superbly adaptable and scalable runtime *rules engines* enforcing the latest version of all your rules.

USoft also offers:

- A complete native development environment for designing and deploying your browser and Windows end user interfaces.
- Fully dynamic and adaptable authorization, development-time and runtime.
- Batch and benchmark definition tools.
- High-level organization of large projects.
- Web server support.
- Business rules invoking third-party components.



## The USoft Advantage

Since the mid-80s, USoft has been at the cutting edge of providing easy-to-use development environments for adaptable business systems. This was made possible by radical implementation of the idea of separate, interacting layers for Data Structure, Business Rules, and Interface Look & Feel. The USoft advantage today is the consolidation and extension of this expertise in two directions:

- **Application-wide manageability**  
Using the same core USoft technology, we manage client tier, application tier and data storage of large business applications, and stays on top of development-time complexity in areas such as version control and parallel development.

These manageability features are specifically designed to support RAD methodologies such as the Dynamic Systems Development Method (DSDM).

- **Interoperability**  
USoft's implicit modularity makes it easy to interact with third-party development tools at all levels: data modeling, rule specification and interface design. If you prefer, ship USoft applications or application areas to third party software management tools.
- **Deployment interoperability** is just as flexible. You can build 3-tier architectures where USoft secures back office transactions for any type of user interface, from web applications to server batch operations.