

A professional woman with blonde hair, wearing a beige blazer over a striped shirt, is seated at a conference table. She is holding a white document and looking towards the camera with a slight smile. In the background, two other people are seated at the table, working on documents. The setting appears to be a modern office or meeting room with large windows.

# USoft Product Information Application Development

## USoft Application Development Rapid, Adaptable, Open IT Solutions

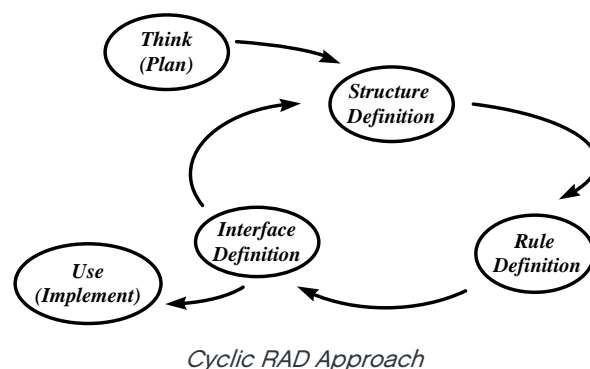
Business is subject to change because of evolving opportunities, pressure from competition, and new customer demands. USoft's technology platform allows you to manufacture large, functionally complex business information systems featuring:

- *Speed* of development.
- High *adaptability* to change.
- An *open architecture*, interoperable with other software and independent of deployment platforms.

### Fast, Iterative Development

Well-established RAD principles of rapid prototyping and iterative, model-based development have governed even the earliest versions of the USoft tool suite. You can have repeated cycles of planning, defining and implementing activities because USoft automatically produces a fully-fledged *default information system* based on simple modeling specifications. USoft's TeamWork module helps you to maintain and componentize business objects and business areas within large projects, and keep track of RAD sessions held and decisions made.

Dynamic Systems Development Method (DSDM), a non-proprietary method, is inherent in USoft's technology and approach.



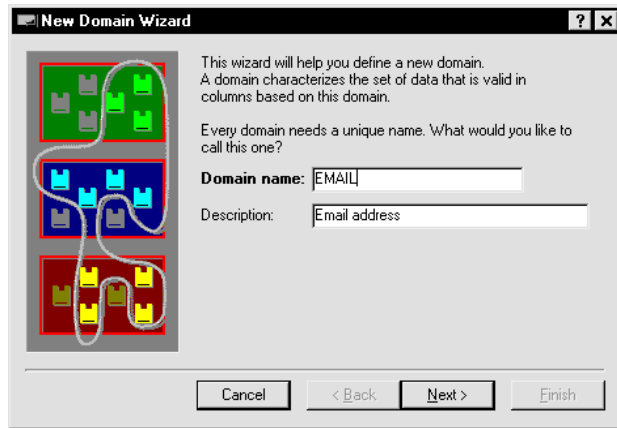
### Adaptability: Single Point of Definition (SPOD)

USoft is *repository-based*: each of your specifications is stored in a central database only once. If you change one, all the runtime elements using it will change accordingly.

In addition, business logic and business rules are completely separate both from data storage and from user interface design. In other words, USoft has rigorously implemented the ANSI/SPARC *3 schema architecture* by setting up independent internal, conceptual and presentation layers.

The result is that your business system will be and remain *highly adaptable*. You can change a business rule independently of other rules or the user interfaces accessing the data subject to that rule, and vice versa.

Core business logic is stored in structures such as domains, table-objects and restrictive rules. Specification work is supported by highly usable tool interfaces for both novice and experienced users, featuring state-of-the-start wizards, catalogs and multiple navigation options. This way, developers are free to concentrate on business logic.



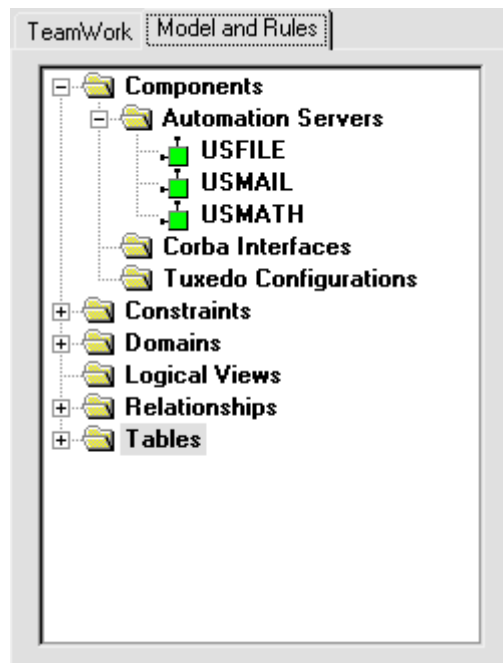
*New Domain Wizard in USoft Definer*

**Open Architecture: One System, Multiple Development Tools and Deployment Platforms**

USoft features an open architecture both for development and deployment.

At development level, benefit from USoft's ability to integrate external componentware such as Java-based and COM+ classes, J2EE components and controls, or ActiveX controls, or prepare to deploy part of your system in a Java Server Pages (JSP) or Active Server Pages (ASP) environment.

Conversely, have non-USoft applications access USoft's business logic through JDBC or ODBC, possibly using Microsoft's Active Data Objects (ADO), expose USoft business rule hubs as web services using XML and SOAP, or in a client/server setting, mobilize USoft's interface objects as Automation servers.



*COM Components in USoft Definer*

As business systems get more heterogeneous, the transparency of USoft's "One Model Fits All" architecture becomes increasingly prominent. What is essentially the same system can be taken to client/server platforms, Web settings, batch-oriented, and componentized environments:

**Windows platform**

For end users working with Microsoft Windows, a full runtime windows application is produced by interpreting your specifications.

Windows and navigation facilities for modeled specifications such as parent-child and supertype-subtype relationships are automatically (re)generated. USoft provides a state-of-the-art Windows Designer to tailor this default interface to the specific needs of your client/server runtime environment.

**Internet and Intranet**

USoft also proposes a number of web strategies. It generates fully functional HTML/XML-based web page prototypes using native transparent componentware and a thin layer of generated ASP/JSP. As part of this concept, USoft Web Designer offers customization options for all data-related interface specifications, such as adding calculation fields or suppressing a data field from a web page.

Less complex customer-driven Internet queries and transactions can be offered in an HTML-based format using JSP or ASP, and checked by a server-side USoft engine guarding your business rules. Static reports are generated using XML or straight HTML.

USoft will publish HTML or server pages directly under a content management system, but does NOT offer content management or web page design (artwork) functionality.

**Non-USoft user interfaces and componentization**

USoft's native JDBC and ODBC drivers makes it possible to approach data guarded by USoft business rules from any environment, for instance, from a Java or COM object layer or Microsoft Access. You can re-use your USoft business logic in a componentized (J2EE, DCOM, CORBA) environment, or combine it with external software such as a workflow engine.

Conversely, at the business rules level, USoft is able to do remote calls to external components through its RDML (Rules-Driven Method Invocation) protocol. What this means is that for each individual business rule, you have the option of specifying the logic that implements it either within USoft, or in any third-party technology or programming language – maybe Java or Visual Basic. USoft will still automate rule interdependency at all times.

**Batch orientation**

From a business logic and rules perspective, there is little difference between on-line and batch processing: both require all business rules to be met at all times. USoft offers an independent batch interface that lets you run off-line jobs against its centrally stored business rules specifications.